

FISHWAY STATUS REPORT

Date: 10/09/11

Inspection Period: 10/02 - 10/08/11

THE DALLES DAM



**US Army Corps
of Engineers**
Portland District

The Dalles Project-Fisheries
P.O. Box 564
The Dalles, OR 97058-9998
Phone: 541-506-3800

Fishways are inspected twice daily. Additional daily monitoring done via automation system in fisheries office.

The Dalles Dam	Inspections Out of Criteria	Criteria Limit	Total Number of Inspections: 19		Temperature: 64.6 F	
			Comments		Secchi: 6.0	Ft.
NORTH FISHWAY						
Exit differential	0	≤ 0.5'				
Count station differential	0	≤ 0.3'				
Weir crest depth	0	1.0' ± 0.1'				
Entrance differential	0	1.0' - 2.0'	Average	1.3		
Entrance weir N1	0	depth (≥ 8')	Average	9.5	Weir was adjusted to increase the differential.	
Entrance weir N2		Closed	Bulkhead installed			
PUD Intake differential	0	≤ 0.5'				
EAST FISHWAY						
Exit differential	0	≤ 0.5'				
Removable weirs 154-157	0	Per forebay	Auto adjusts 1' increments.			
Weir 158-159 differential	0	1.0' ± 0.1'				
Count station differential	0	≤ 0.3'	Picket leads raked 10/2, 10/3, 10/4, 10/8. Window cleaned 10/3.			
Weir crest depth	0	1.0' ± 0.1'				
Junction pool weir JP6	0	depth (≥ 7')	Manually adjusted as needed.			
East entrance differential	0	1.0' - 2.0'	Average	1.6	Daily differentials & weir depths, see AVGS tab.	
Entrance weir E1	0	No criteria	Average	5.9	Manually adjusted.	
Entrance weir E2	0	depth (≥ 8')	Average	11.2		
Entrance weir E3	0	depth (≥ 8')	Average	11.2		
Collection channel velocity	0	1.5 - 4 fps	Average	2.3	See Velocities tab for more complete information.	
West entrance differential	0	1.0' - 2.0'	Average	1.3		
Entrance weir W1	0	depth (≥ 8')	Average	8.5		
Entrance weir W2	0	depth (≥ 8')	Average	8.5		
Entrance weir W3	0	No criteria	Average	Closed		
South entrance differential	0	1.0' - 2.0'	Average	1.5	Daily differentials & weir depths, see AVGS tab.	
Entrance weir S1	1	depth (≥ 8')	Average	8.1	Δ'd set point, quickly corrected	
Entrance weir S2	0	depth (≥ 8')	Average	8.1		
JUVENILE PASSAGE						
Sluiceway operation	0	units 1,8,18				
Turbine trashrack drawdown	0	<1.5', wkly	Range:	0.2' to 0.5'		
Spill volume	0	40%, 24hr	Average	On seal.		
Spill Pattern	0	per FPP		On seal.		
Turbine Unit Priority	0	per FPP				
Turbine 1% Efficiency	0	per FPP				

OTHER ISSUES:**THE DALLES****Birds:**

Few grebes and gulls but mostly cormorants around the project. Intermittent Mergansers present at tailrace normal for this time of year. See the Avian Distribution tab below for details. Final Memorandum of Agreement for USDA bird abatement completed. Will include mid April to May.

Pikeminnow:

The Columbia River Northern Pikeminnow Management Program Dam Angling and Site-Specific Fishery:

Year to date totals for the fishing season: Dam angling 721.06 hours, 1,199 NPM, 1,191 NPM \geq 230mm, 33 sturgeon, 87 game fish, and ten non-game fish. Electro fishing year to date totals: 24 NPM tagged, 23 effort hours, 24 \geq 230mm, 74 adult salmonids, 991 juvenile salmonids, 30 sturgeon, 240 game fish, and 3,901 non-game fish.

Operations:

Calibration completed on 9/29. Most values are within criteria. Electricians have been notified of the ones outside of criteria.

Gatewell drawdown was completed on 10/2 and all values were within criteria.

The third fishway daily inspections trend taken from the fisheries office SCADA system indicated that all fishway entrances and exits remained in criteria from 1700 to 0630 hours.

Maintenance:

Due to low tailwater, fisheries are unable to maintain $> 7'$ depth for water over weir JP-6. Currently the weir has been raised completely out of the junction pool to achieve criteria.

Spillwall dive inspection 10/6 to 10/7 to inspect for erosion. Mr. Cordie will hold spillway clearances.

There was a multibeam hydrographic survey of The Dalles Dam stilling basin and spillway wall for erosion 9/27 - 9/28; see picture tab below.

Studies:

Fisheries and Natural Resources toured several areas of COE property as potential wetland enhancement projects. Findings will be presented to District.

Annual Power Biologist conference in Hood River 10/11 to 10/13. Mr. Cordie to present PowerPoint of The Dalles Dam on 10/11.

NWW/NWP inland avian predation work group meeting at Westrick moved from 9/27 to 10/25.

Adult fishway PIT tag development team conducted alternative ranking meeting 9/29.

East fish way backup water supply study support continues. Project engineering is planning scope of work for dewatering fish lock channels, cleaning supply piping and testing the amount of water that can be provided by the fish lock system. Study team to meet with HDR for The Dalles site visit 10/13

Research:

U.S. Fish and Wildlife and Columbia River Inter-Tribal Fish Commission (CRITFC) continue to down load camera DVR's of lamprey passage between count station picket leads. Monitoring will conclude the end of October.

Washington Department of Fish and Wildlife (WDFW) fish counters on site through end of October.

Battelle juvenile salmon acoustic tags (JSAT) research demobilizing equipment for winter as needed.

Oregon Department of Fish and Wildlife (ODFW) bass angling finished their field activities at the end of August and are currently working on diet sample lab work. The draft report will be completed some time in February. Preliminary analysis of the catch and effort data propose a June to September sample period for next year.

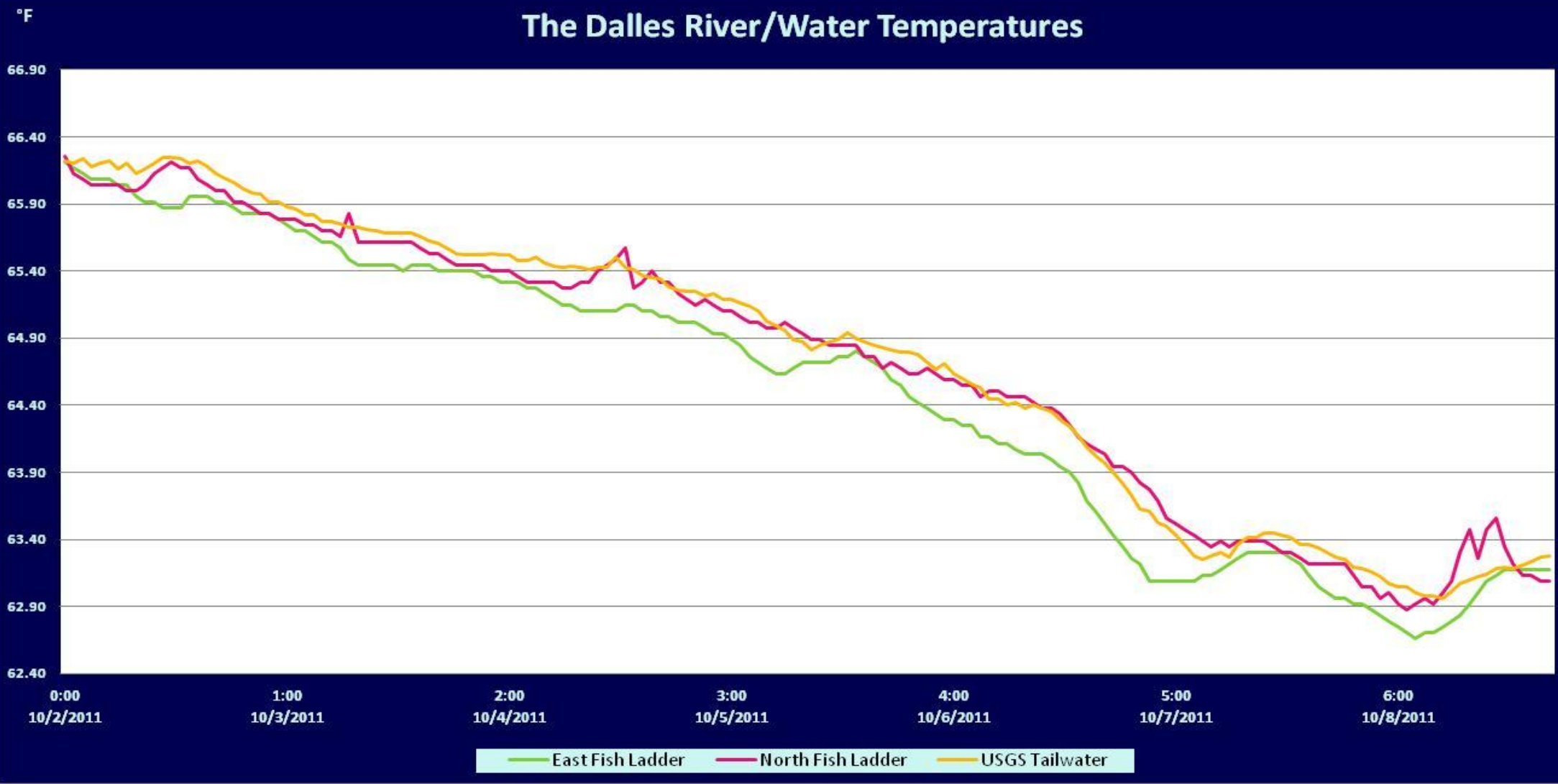
Approved by;
Ron D. Twiner
Operation Project Manager
The Dalles Dam

The Dalles Dam Fish Counts

Date	East	North	East	North	Total	Total	East	North					East	North					Spill
	Chinook	Chinook	Chinook	Chinook	East	North	Unclipped	Unclipped	East	North	East	North	Coho	Coho	East	North	East	North	
	Adult	Adult	Jack	Jack	Sthd	Sthd	Sthd	Sthd	Sock	Sock	Coho	Coho	Jack	Jack	Lamprey	Lamprey	Pink	Pink	Volume
2-Oct	1642	89	745	40	1485	328	470	95	0	0	668	166	24	4	1	2			o n s e a l
3-Oct	1326	64	505	37	1255	237	367	79	0	0	509	138	25	0	2	0	10		
4-Oct	1337	56	527	47	617	84	181	26	0	0	304	49	11	1	4	0	4		
5-Oct	1712	55	686	40	757	107	239	25	0	0	262	44	11	-1	2	1	6		
6-Oct	2480	44	817	41	1057	94	295	22	0	0	996	173	46	2	0	1	2		
7-Oct	1903	79	680	37	1727	171	558	47	0	0	3628	454	85	4	1	0	6		
8-Oct	1426	88	464	26	1052	118	314	41	0	0	1874	250	65	1	0	1	7		
Wkly Tot	11826	475	4424	268	7950	1139	2424	335	0	0	8241	1274	267	11	10	5	35	0	
% Split	96.1%	3.9%	94.3%	5.7%	87.5%	12.5%	87.9%	12.1%	0.0%	#DIV/0!	86.6%	13.4%	96.0%	4.0%	66.7%	33.3%	100.00%	0.00%	

Spill range: On seal.

The Dalles River/Water Temperatures



The Dalles Dam Maximum Daily Bird Observations

Washington Shore

SW-T1: 0-2
cormorant.

SW-T3: 44
cormorants and 14
gulls resting on rocks,
six mergansers and
two cormorants active.

SW-T4: 3 gull,
one heron
resting.

FB1: 48 cormorants
resting in towers, 3
gull and 3 cormorant
active.

SW-T2: two
cormorants active, 6

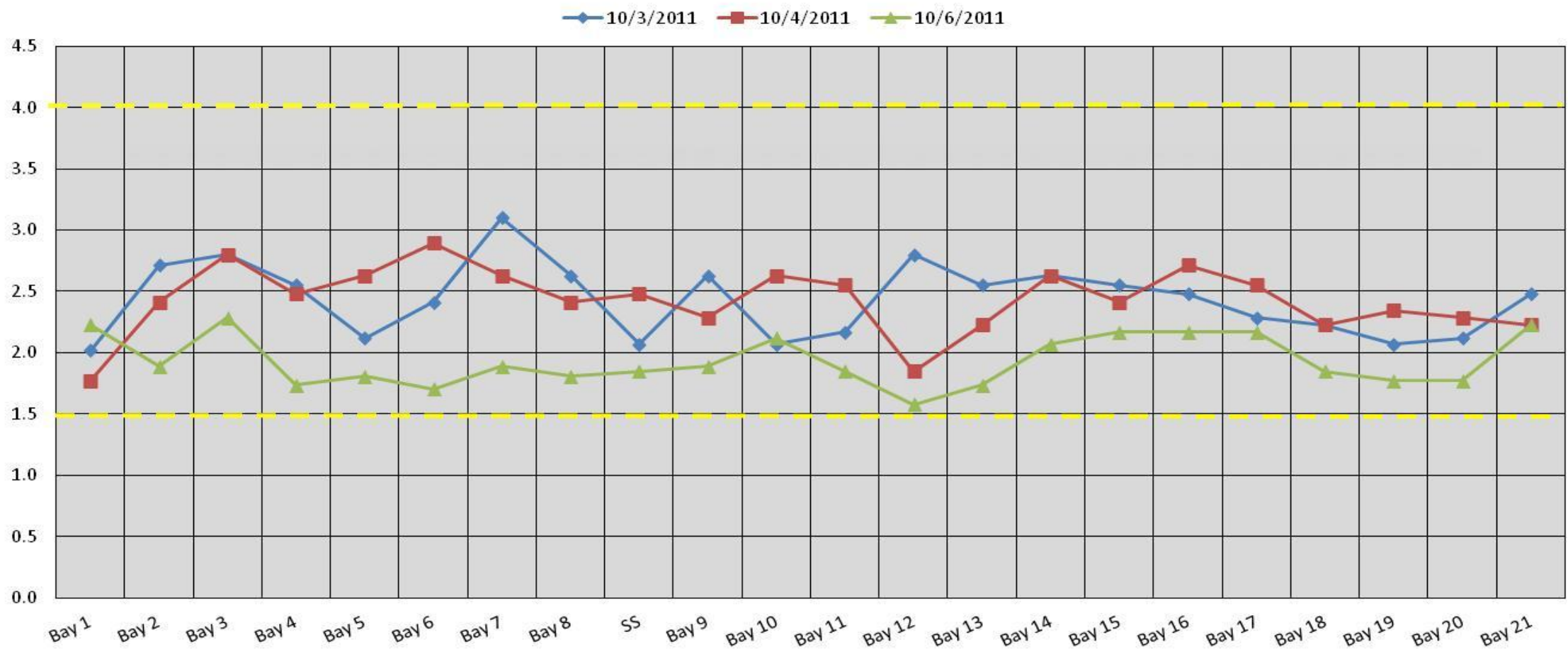
PH-T1: 13
cormorants, 1
heron and 19
merganser resting
on rocks and 3
cormorants active.

PH-T2: one
cormorant

PH-T3: 6 gull on wing.

Oregon Shore

The Dalles Dam Collection Channel Velocities (fps)



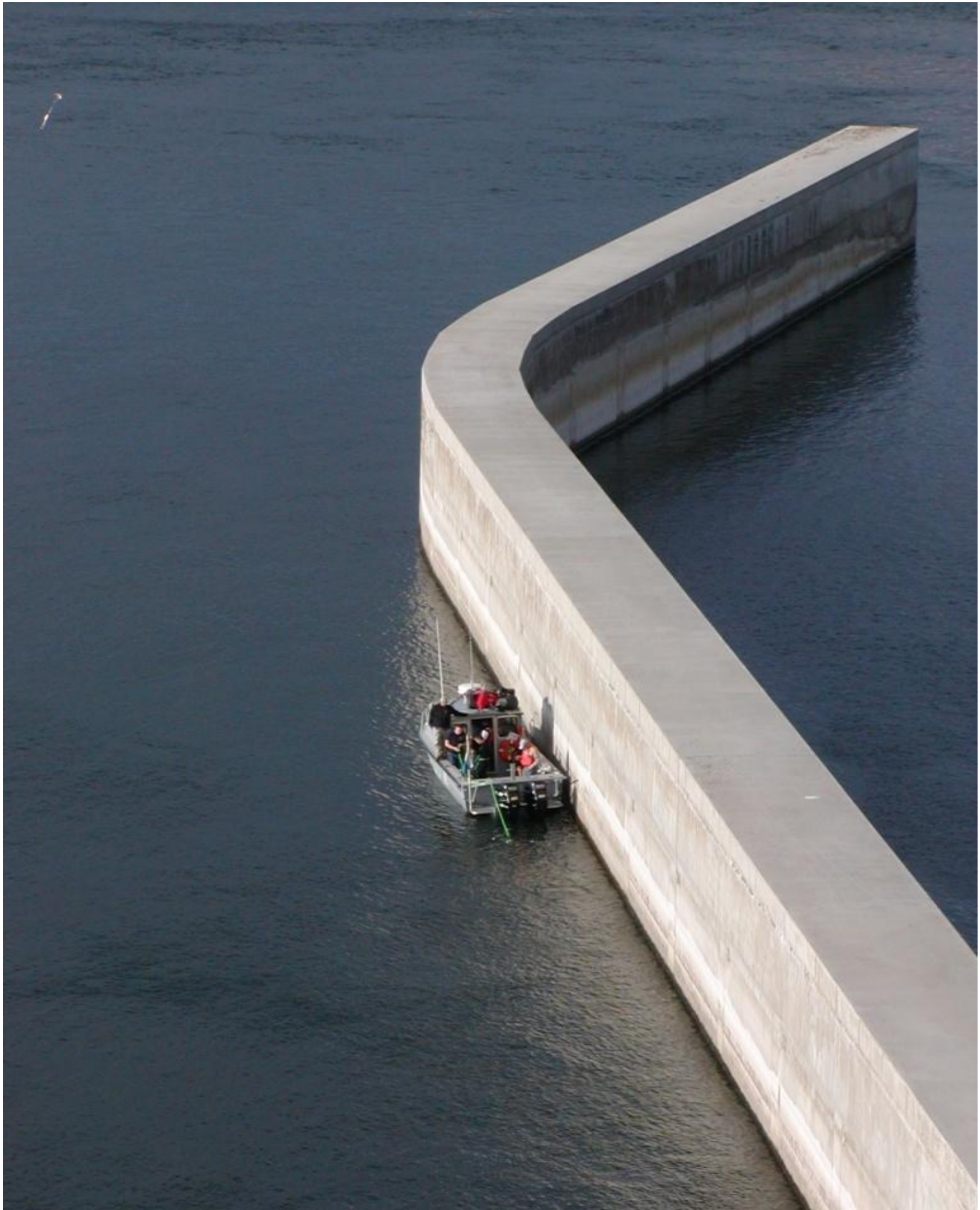
Temp:		Secchi:	
	66.0	SUN	6.0
	65.6	MON	6.0
	65.3	TUES	6.0
	64.8	WED	6.0
	64.2	THUR	6.0
	63.3	FRI	6.0
	63.0	SAT	6.0
AVG:	64.6	AVG:	6.0

The Dalles Dam Daily Readings and Averages for
Temperatures, Secchi, Entrances, and Spill

North Fish Ladder			East Fish Ladder											% Spill	
North Entrance		East Entrance						West Entrance			South Entrance				
Date:	Differential	N1 Depth	Differential	E1Depth	E2 Depth	E3 Depth	JP 6	Differential	W1Depth	W2 Depth	W3 Depth	Differential	S1 Depth		S2 Depth
10/2/11	1.2	9.7	1.6	6.0	11.0	11.0	9.9	1.4	8.5	8.6	Closed	1.3	8.2	8.2	
10/2/11	1.3	9.6	1.6	6.0	11.0	11.0	9.9	1.4	8.5	8.5		1.3	8.2	8.1	
10/2/11			1.6	6.0	11.0	11.0	9.9	1.4	8.5	8.4		1.4	8.0	8.1	
10/3/11	1.1	9.5	1.4	6.0	11.0	11.0	8.9	1.1	8.6	8.5		1.3	8.2	8.1	
10/3/11	1.3	9.4	1.6	6.1	11.0	11.0	9.7	1.3	8.5	8.5		1.3	8.2	8.1	
10/3/11			1.4	5.9	11.0	11.0	8.9	1.2	8.5	8.4		1.2	8.0	8.1	
10/4/11	1.3	9.6	1.6	6.0	11.0	11.0	9.2	1.1	8.6	8.5		1.2	8.3	8.2	
10/4/11	1.3	9.5	1.6	6.0	11.0	11.1	10.5	1.4	8.5	8.5		1.4	8.2	8.2	
10/4/11			1.5	5.9	10.9	10.9	8.9	1.3	8.4	8.4		1.3	8.1	8.1	
10/5/11	1.3	9.5	1.9	6.0	10.9	11.0	10	1.4	8.5	8.4		1.4	8.1	8.0	
10/5/11	1.3	9.4	1.7	8.0	11.1	11.1	10.3	1.3	8.5	8.6		1.4	8.1	8.1	
10/5/11			1.5	6.1	11.1	10.9	9.6	1.3	8.6	8.6		1.1	8.5	8.4	
10/6/11	1.3	9.5	1.7	8.1	11.1	11.0	10.1	1.4	8.5	8.5		1.3	8.2	8.2	
10/6/11	INSPECTIONS WERE PERFORMED, MISPLACED/LOST HARDCOPIES														
10/6/11	INSPECTIONS WERE PERFORMED, MISPLACED/LOST HARDCOPIES														
10/7/11	1.3	9.4	1.2	5.9	11.1	10.9	9.2	1.2	8.5	8.5		1.3	8.1	8.1	
10/7/11	1.3	9.4	1.3	6.0	12.0	12.0	9.9	1.2	8.6	8.5	1.3	8.2	8.2		
10/7/11			1.2	4.6	12.1	12.1	9.5	1.2	8.5	8.6	1.3	8.1	8.1		
10/8/11	1.3	9.5	1.5	4.6	11.6	11.5	10.1	1.4	8.6	8.5	1.4	7.9	8.1		
10/8/11	1.3	9.6	1.9	4.0	11.4	11.5	10.1	1.4	8.1	8.2	1.4	8.1	8.2		
10/8/11			1.7	4.4	11.4	11.5	9.7	1.4	8.5	8.4	1.5	8.0	8.0		
AVG:	1.3	9.5	1.6	5.9	11.2	11.2	9.7	1.3	8.5	8.5	Closed	1.3	8.1	8.1	

ON SEAL

Third fish way inspection for east fish ladder, east, west, and south entrances completed via automation system in fisheries office.



Multibeam hydrographic survey of The Dalles stilling basin and spillwall 9/27 - 9/28.